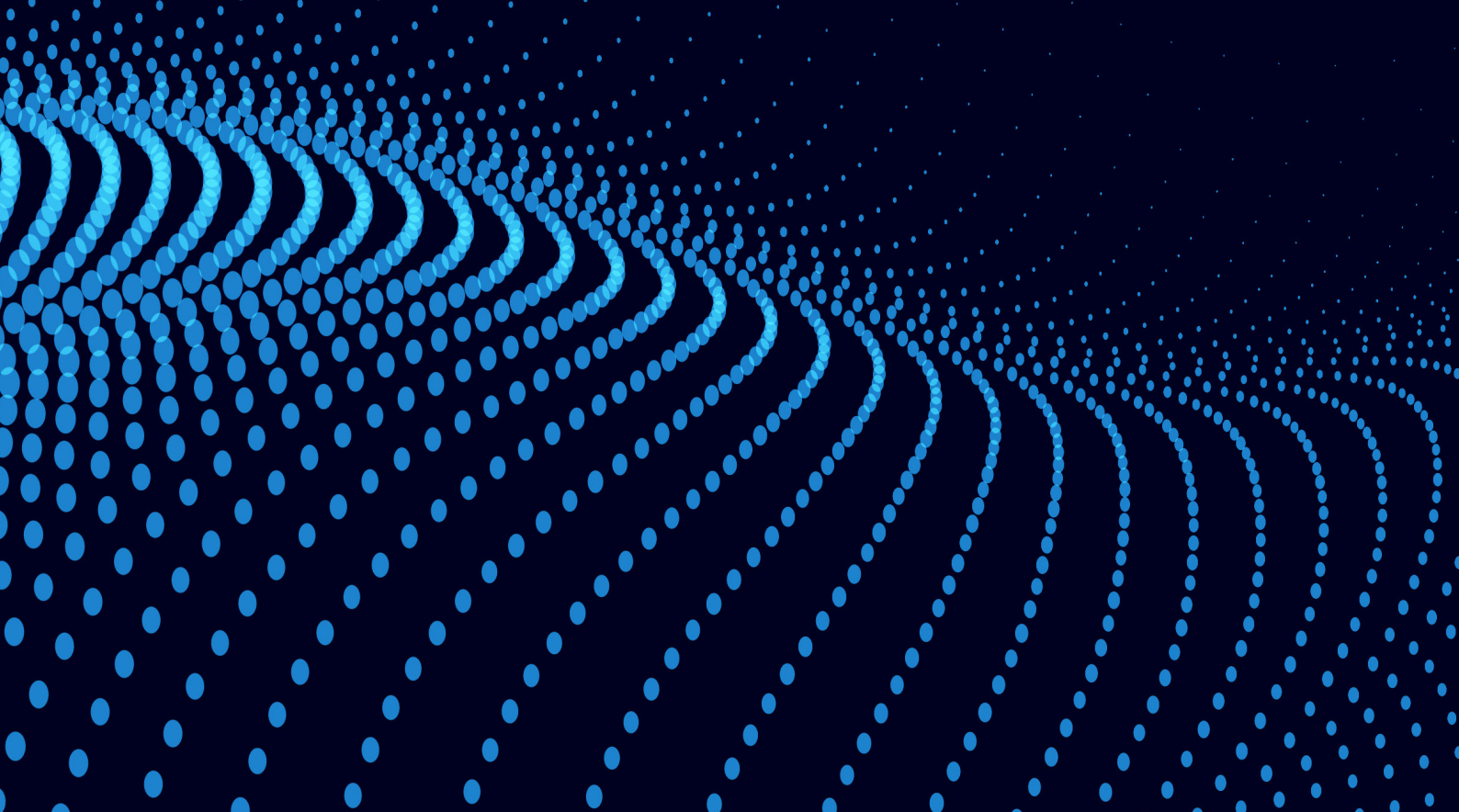


PRODUCT CATALOGUE

Professional LED Products Manufacturer



20

20 Years Experience in the LED Field

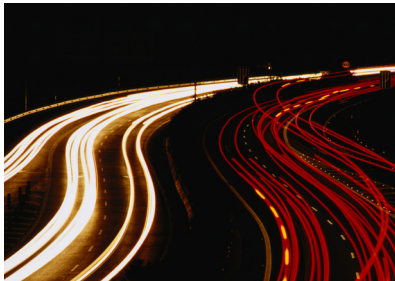
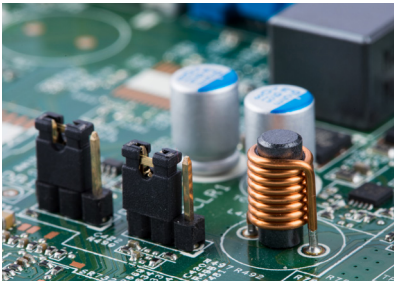
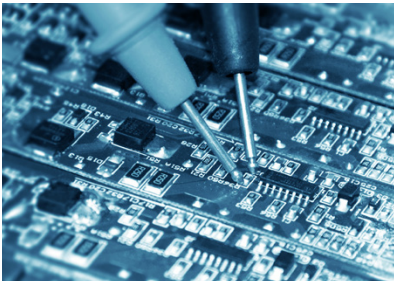
Company Profile

Shanghai Edge Light Industry Co., Ltd. (EDGE LIGHT), founded in 2004, is one of the world's leading brand manufacturers of LED products and intelligent control products. Currently, it has five production bases around the world: Shanghai Headquarters (1# production base area About 33,000 m²), Tianjin (2# production base area is about 20,000m²), Germany Edgelight GmbH (3# production base area is about 1,500m²), American Edgelight LLC (4# production base area is about 1,679m²), Shanghai factory (5# production base with an area of about 10,000 m²) is under construction. Mainly engaged in the research and development and manufacture of LED displays, Internet of Things electronic equipment, intelligent controllers, LED drivers, Edgelux panels, and advertising lighting equipment.

Since its establishment, Edgelight Industry has invested a lot of money in research and development and automated intelligent production, and successfully established its own laboratory within the company, focusing on the introduction of technical personnel, focusing on optical technology, intelligent control system software and hardware. While upgrading production and research and development, it also expands the field of product application. Edgelight has customers all over the world, and the quality and performance of its products have been recognized by many customers in various regional markets such as Asia, Europe, and America, and enjoy a good brand reputation.

Edgelight has been recommended and commended by industry organizations for many times: it has won a total of 69 honors, including "Technology Innovation Fund for Small and Medium-sized Science and Technology", "Songjiang District Patent Pilot Enterprise", "Shanghai High-tech Enterprise", "CSA China Advertising Equipment Equipment Value List - Logo Application Quality Enterprise", "Technological Innovation Fund for Small and Medium-Sized Enterprises in Science and Technology", "Shanghai Specialized and Specialized New Enterprise", "Songjiang District Enterprise Technology Center", 2 "High-tech Achievement Transformation Projects", Industry Associations Awarded the title of "Enterprise with the Most Effective Energy Conservation and Emission Reduction". At present, 5 scientific and technological achievements have been checked by the Chinese Academy of Sciences and have reached the international advanced level; the enterprise has passed the "ISO Quality Management System" certification, "ISO Environmental Management System Certification", UL, CE , RoHS, CB, CCC and other product certifications, a total of 91; while the company is developing rapidly, intellectual property and brand building are the top priorities, and it has obtained 234 domestic authorized patents and 1 Korean authorized patent, 1 American invention patent, and There are 9 invention patents and 3 PCT patents in other international countries, 128 domestic trademark certificates and 69 international trademark certificates.





LED Driver

- 07 Linear Slim Built-in LED Driver
- 09 Desktop Adapter
- 11 Waterproof LED Driver

LED Controller

- 15 Y Series

LED Strip

- 19 High Power Side Lighting Strip
- 23 Backlight LED Strip

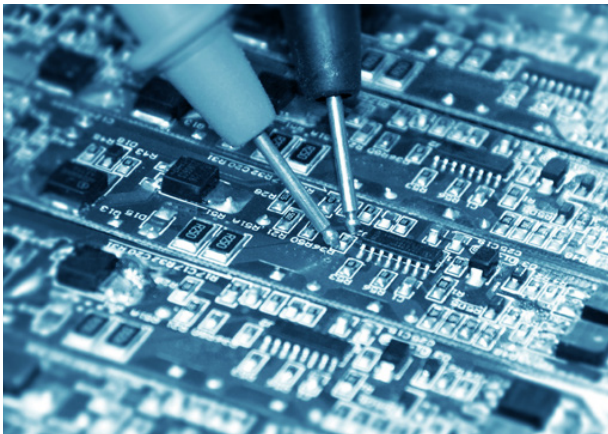
Edgelux® Panel

- 25 Edgelux® Panel
- 29 Frameless Light Panel

Light Box

- 33 Fabric Light Box
- 35 Clip Type Light Box
- 37 Magnetic Type Light Box

LED Driver



Strength

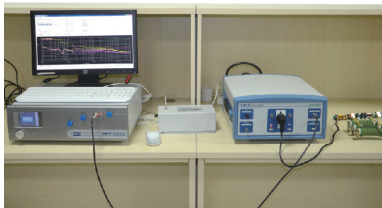
We have been working hard all the time

We are continually working to develop ourselves further. Edgelight is a high-tech company that embraces research and development, production and sales and specializes in the manufacture of LEDs, drivers and other related products. The company has the most advanced production facilities, a highly efficient management team, a well-trained technical staff and follows the corporate philosophy of “quality through development, technology, market orientation, customer and service”. We strive to be an efficient and cost-effective manufacturer of LEDs and power supplies. Our product design fully complies with the safety standards UL8750, UL60950, UL1310 and are certified amongst other to CE, 3C, UL, CB, TUV, PSE, EK and other certifications.

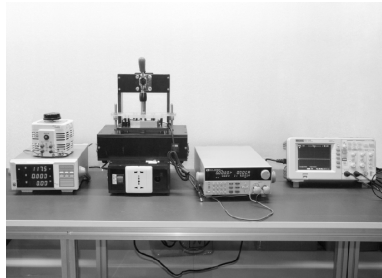
Production Display



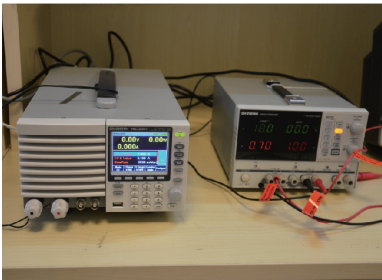
Wave Soldering



EMC Tester



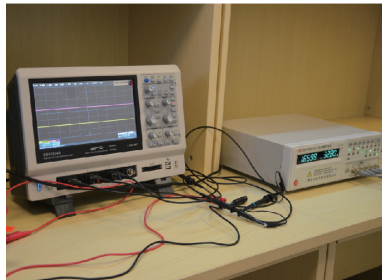
Function Test Desk



Integrated Circuit Load



Program Control AC LED Driver



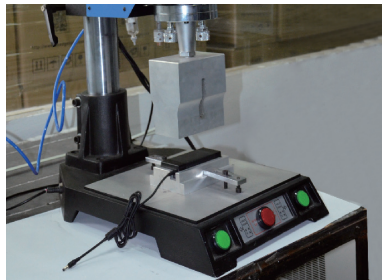
Oscilloscope



Dielectric Strength Tester



Smart Aging System

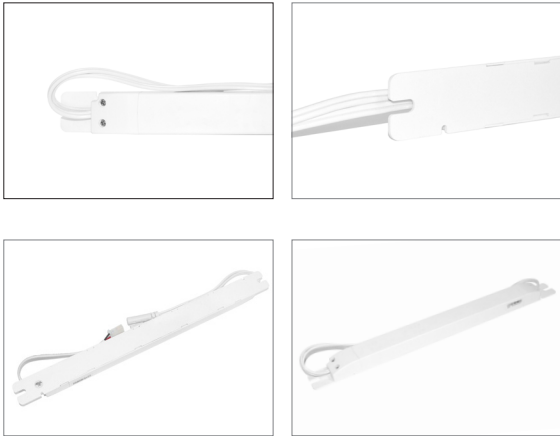


Shell Pressing Machine



Linear Slim Built-in LED Driver

This product is a slim built-in power supply unit with an active PFC function on the output channel. Protection class is IP20 (indoor area) with short-circuit protection, overvoltage protection and overheating protection function.



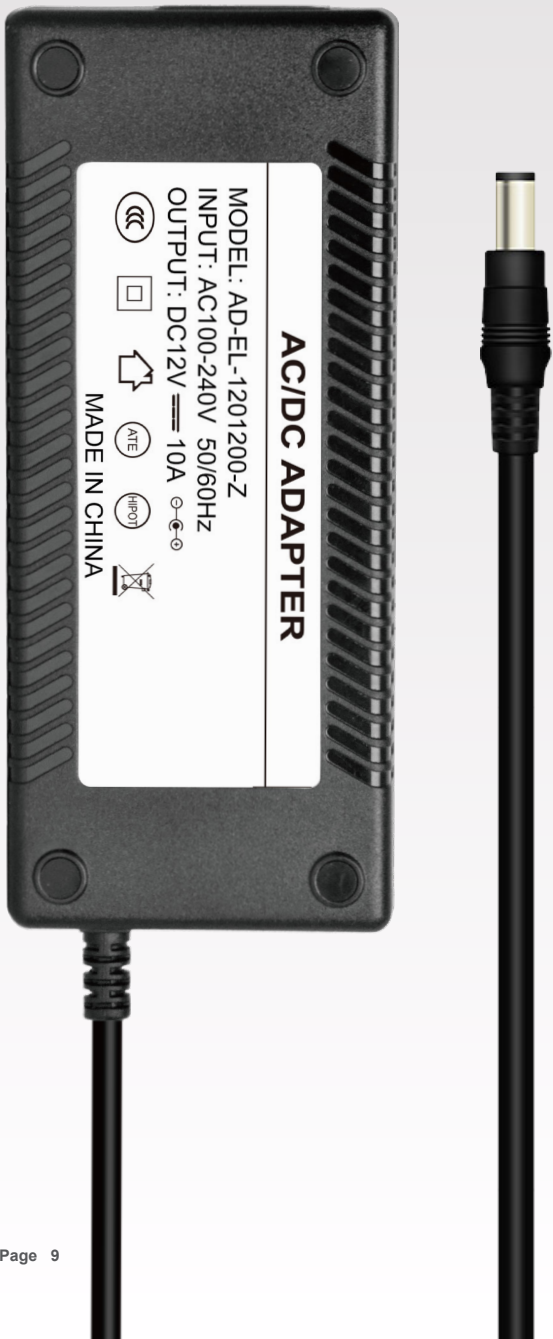
Output Voltage	Item	Output Current	Input Voltage	Power	Efficiency	Product Size
12V	AD-EL-1200600-B	5A	200-240V	60W	≥ 85%/220V	377*30*20mm
	AD-EL-1200750-B	6.25A	100-240V	75W	≥ 90%/220V	377*30*20mm
	AD-EL-1201000-B	6.6A@100-120V 8.3A@200-240V	100-240V	80W@100-120V 100W@200-240V	≥ 90%/220V	377*30*17mm
	AD-EL-1201200-B	10A	100-240V	120W	≥ 90%/220V	417*30*25mm
	AD-EL-1201600-B	13.3A	100-240V	160W	≥ 92%/230V	500*30*17mm
24V	AD-EL-2400600-B	2.5A	200-240V	60W	≥ 85%/220V	377*30*20mm
	AD-EL-2400750-B	3.125A	100-240V	75W	≥ 90%/220V	377*30*20mm
	AD-EL-2400960-B	3.33A@100-120V 4A@200-240V	100-240V	80W@100-120V 96W@200-240V	≥ 90%/220V	377*30*17mm
	AD-EL-2401000-B	3.33A@100-120V 4.16A@200-240V	100-240V	80W@100-120V 100W@200-240V	≥ 90%/220V	377*30*17mm
	AD-EL-2401200-B	5A	100-240V	120W	≥ 90%/220V	417*30*25mm
	AD-EL-2401200-B (PF>0.9)	5A	100-240V	120W	≥ 90%/220V	417*30*25mm
	AD-EL-2401200-T	5A	100-240V	120W	≥ 90%/220V	493*32*12.8mm
	AD-EL-2401500-B	5A@100-120V 6.25A@200-240V	100-240V	120W@100-120V 150W@200-240V	≥ 92%/230V	417*30*25mm
	AD-EL-2402000-B	6.7A@100-120V 8.4A@200-240V	100-240V	160W@100-120V 200W@200-240V	≥ 92%/230V	500*30*17mm

DIMMABLE

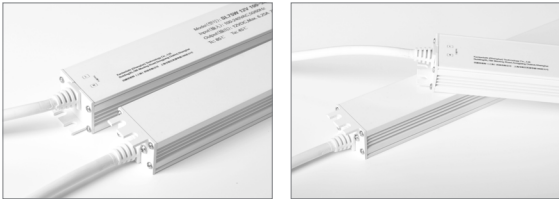
12V	AD-EL-1201000-D	6.6A@100-120V 8.3A@200-240V	100-240V	80W@100-120V 100W@200-240V	≥ 90%/220V	377*30*17mm
	AD-EL-1201200-D	10A	100-240V	120W	≥ 90%/220V	417*30*25mm
24V	AD-EL-2400960-D	3.33A@100-120V 4A@200-240V	100-240V	80W@100-120V 96W@200-240V	≥ 90%/220V	377*30*17mm
	AD-EL-2401000-D	3.33A@100-120V 4.16A@200-240V	100-240V	80W@100-120V 100W@200-240V	≥ 90%/220V	377*30*17mm
	AD-EL-2401200-D	5A	100-240V	120W	≥ 90%/220V	417*30*25mm

Desktop Adapters

The use of high-quality components extends the service life of products. We achieve the high longevity through the use of resilient, temperature-resistant and fireproof ABS. With overcharge protection, overvoltage protection, intelligent temperature control, power failure protection (OCP OVP OTP SCP) safety protection chip.



Output Voltage	Model	Output Current	Input Current	Power	Efficiency	Product Size
12V	AD-EL-120480-Z	4A	0.5A@230V	48W	≥ 80%/220V	115*50*30.3mm
	AD-EL-120600-Z	5A	0.5A@230V	60W	≥ 80%/220V	140*60*32mm
	AD-EL-1201200-Z	10A	0.86A@230V	120W	≥ 85%/220V	171.5*72*33.1mm
	AD-EL-1201200-Z (PF>0.9)	10A	0.86A@230V	120W	≥ 90%/220V	171.5*72*33.1mm
24V	AD-EL-240480-Z	2A	0.6A@230V	48W	≥ 80%/220V	115*50*30.3mm
	AD-EL-240720-Z	3A	0.5A@230V	72W	≥ 85%/220V	140*60*32mm
	AD-EL-240960-Z	4A	0.8A@230V	96W	≥ 85%/220V	171.5*72*33.1mm
	AD-EL-2401200-Z	5A	0.9A@230V	120W	≥ 85%/220V	171.5*72*33.1mm
	AD-EL-1201200-Z (PF>0.9)	5A	0.9A@230V	120W	≥ 90%/220V	171.5*72*33.1mm
	AD-EL-2401440-Z	6A	0.8A@230V	144W	≥ 90%/220V	171.5*72*33.1mm
	AD-EL-1201440-Z (PF>0.9)	6A	0.8A@230V	144W	≥ 90%/220V	171.5*72*33.1mm



Waterproof LED Driver

/

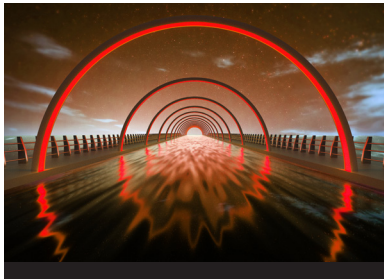
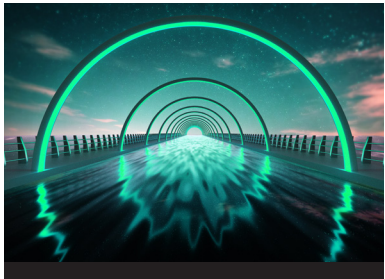
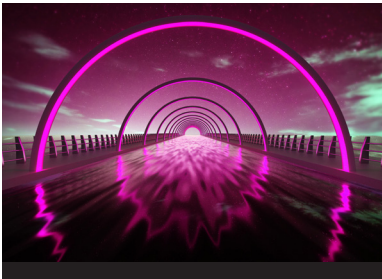
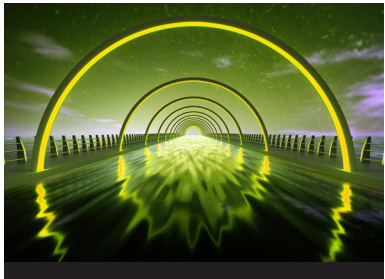
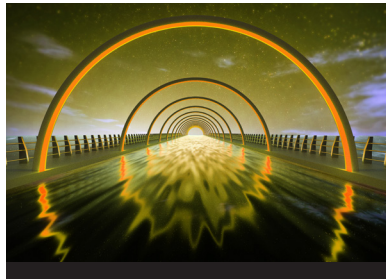
An ultra-small size, high-efficiency waterproof power supply that meets CE, CB, UL test requirements, it uses a new IC scheme circuit design, so that the product has the characteristics of low noise, energy saving, environmental protection, and long life.

IP65

Output Voltage	Model	Output Current	Input Voltage	Power	Efficiency	Product Size
12V	AD-EL-WF-1200750	6.25A	100-240V	75W	≥ 90%/220V	302*33.5*22.6mm
	AD-EL-WF-1201000	6.6A@100-120V 8.3A@200-240V	100-240V	80W@100-120V 100W@200-240V	≥ 90%/220V	302*33.5*20.1mm
	AD-EL-WF-1201200	10A	100-240V	120W	≥ 90%/220V	342*33.5*22.6mm
	AD-EL-WF-1201600	13.3A	100-240V	160W	≥ 92%/220V	449*33.5*20.1mm
24V	AD-EL-WF-2400750	3.125A	100-240V	75W	≥ 90%/220V	302*33.5*22.6mm
	AD-EL-WF-2400960	3.33A@100-120V 4A@200-240V	100-240V	80W@100-120V 96W@200-240V	≥ 90%/220V	302*33.5*20.1mm
	AD-EL-WF-2401000	3.33A@100-120V 4.16A@200-240V	100-240V	80W@100-120V 100W@200-240V	≥ 90%/220V	302*33.5*20.1mm
	AD-EL-WF-2401200	5A	100-240V	120W	≥ 90%/220V	342*33.5*22.6mm
	AD-EL-WF-2401500	5A@100-120V 6.25A@200-240V	100-240V	120W@100-120V 150W@200-240V	≥ 90%/220V	302*33.5*22.6mm
	AD-EL-WF-2402000	6.7A@100-120V 8.4A@200-240V	100-240V	160W@100-120V 200W@200-240V	≥ 90%/220V	449*33.5*20.1mm

LED Controller

The function of LED controllers is to control, adjust or dim the brightness or light color. This allows you to customize the lighting to suit your needs. Edgelight is committed to innovative research in the field of lighting control, with many years of industry-specific experience and success in the development of new products.



" You choose the color, I present "

Single color, color temperature and RGB are easily matched to meet your needs.

Overcurrent protection

Overtemperature protection

Short circuit protection

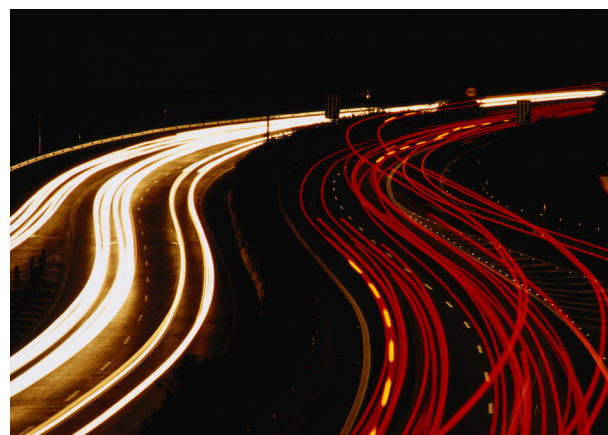


Picture	Remote Control	Receiver	Mode	Input Voltage	Max Load Power	Max Load Current	Package Size
1	LC-CON-3V-Y1-KANTENLICHT	CL 4×2.5A-2.4G	Dimming	12~24Vdc	(0-60W...120W)×4CH	5A×4CH	227*156*21mm
2	LC-CON-3V-Y2-KANTENLICHT	CL 4×2.5A-2.4G	Color tem.	12~24Vdc	(0-60W...120W)×4CH	5A×4CH	227*156*21mm
3	LC-CON-3V-Y3-KANTENLICHT	CL 4×2.5A-2.4G	RGB	12~24Vdc	(0-60W...120W)×4CH	5A×4CH	227*156*21mm
4	LC-CON-3V-Y4-KANTENLICHT	CL 4×2.5A-2.4G	RGBW	12~24Vdc	(0-60W...120W)×4CH	5A×4CH	227*156*21mm
5	LC-CON-3V-Y5-KANTENLICHT	CL-1PWM-2D4G	PWM	12~24Vdc	---	---	227*156*21mm

Y Series LED Controller

- Y1 is only for white Flex and Backlight Edgelight LEDs.
- Y2 is for TW (tunable white 3000-6000K) as Flex, Backlight LEDs.
- Y3 is for RGB Flex LEDs.
- Y4 is for RGBW Flex & Backlight LEDs.
- Y5 is a PWM Dimmer .

LED Strip



Superior production environment
Advanced production equipment
Scientific production process
Perfect quality management system

LED light strips are widely used, whether it is lighting or installed in the light box, it is a good choice, LED strips can be adjusted very high, can meet different customers, different needs.

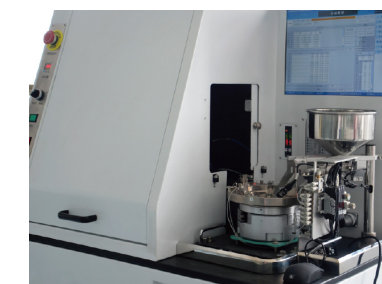
Production Display



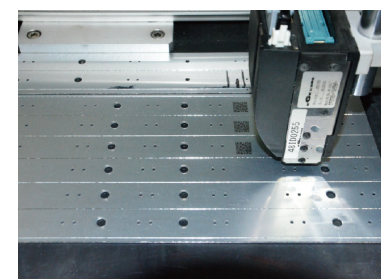
SMT Mounter



Glue Filling Machine



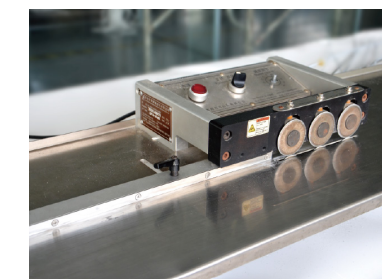
Sorting Machine



Ink Jet Printer



Lens Assembly Line



PCB Distributor



LED Packing Machine



Reflow Soldering Machine



Integrating Sphere

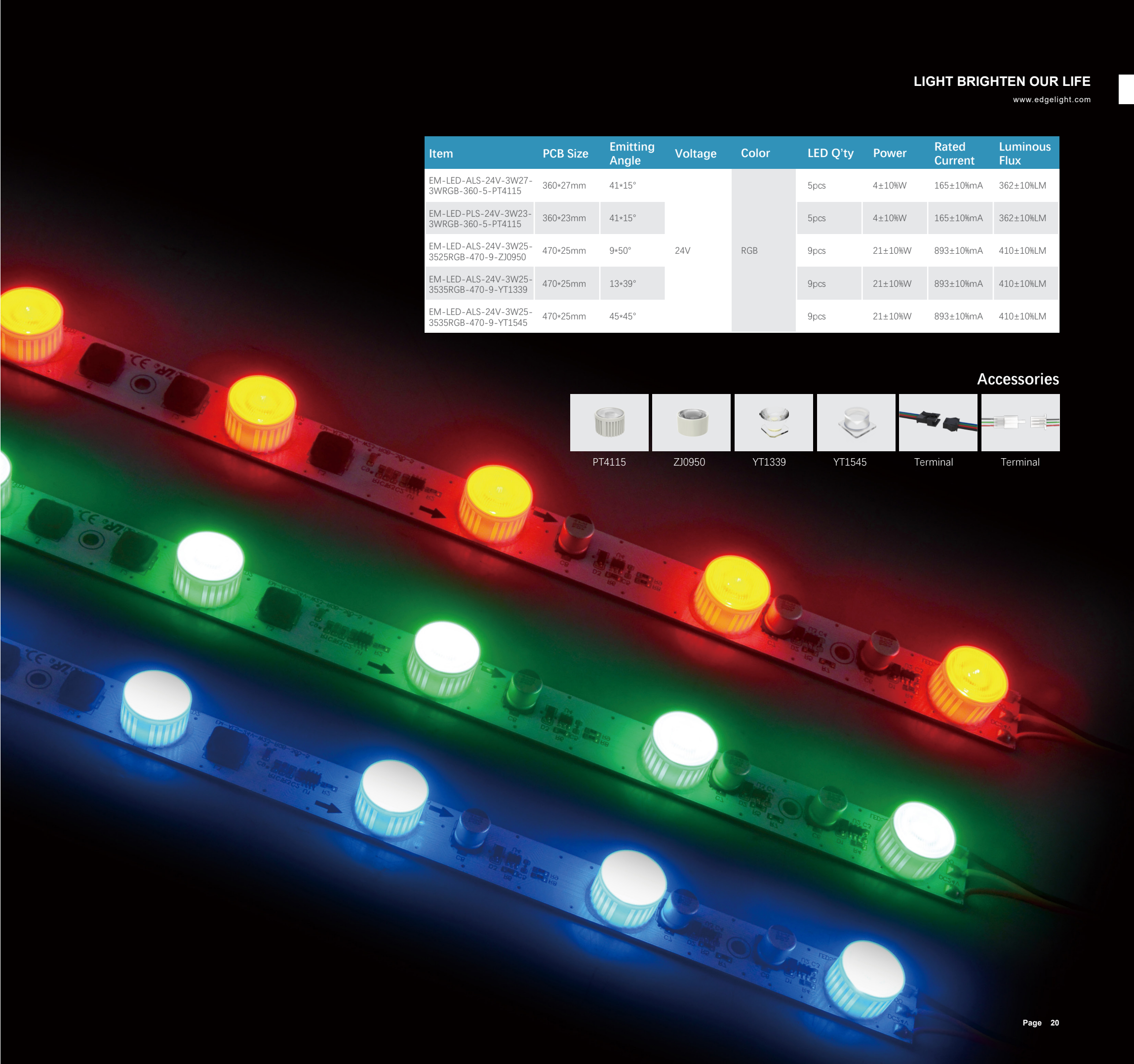
Edgemax RGB Led Strip (Edge lighting)

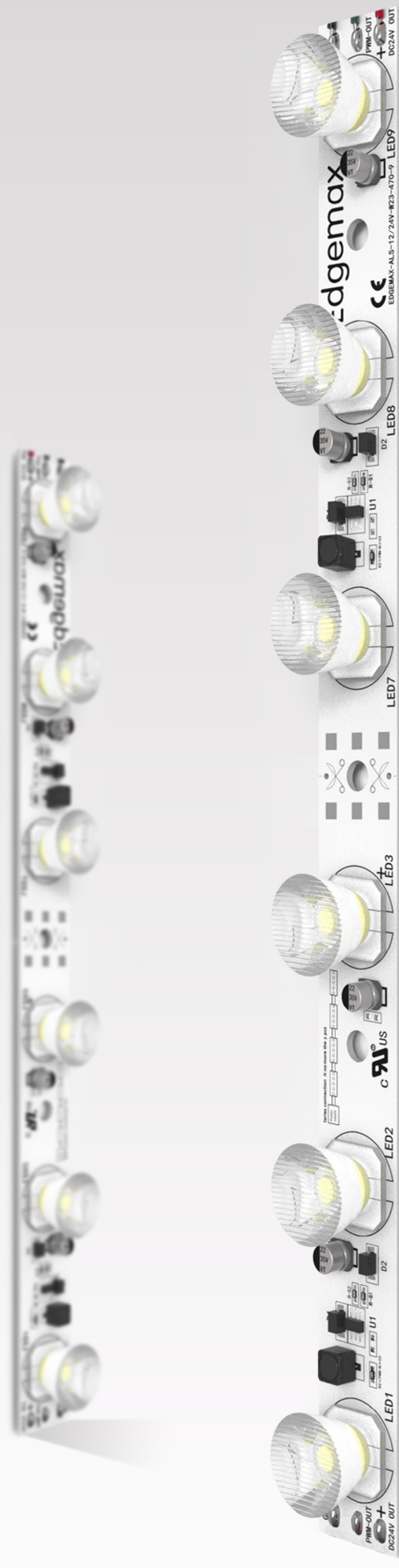
- 1. High quality aluminum substrate for better heat dissipation and improved lifespan of the LED circuit board.
- 2.High light transmission lens to effectively improve brightness.
- 3.Suitable for one-sided and double-sided light boxes, effective lighting distance up to 3 meters.



Item	PCB Size	Emitting Angle	Voltage	Color	LED Q'ty	Power	Rated Current	Luminous Flux
EM-LED-ALS-24V-3W27-3WRGB-360-5-PT4115	360*27mm	41*15°	24V	RGB	5pcs	4±10%W	165±10mA	362±10LM
EM-LED-PLS-24V-3W23-3WRGB-360-5-PT4115	360*23mm	41*15°			5pcs	4±10%W	165±10mA	362±10LM
EM-LED-ALS-24V-3W25-3525RGB-470-9-ZJ0950	470*25mm	9*50°			9pcs	21±10%W	893±10mA	410±10LM
EM-LED-ALS-24V-3W25-3535RGB-470-9-YT1339	470*25mm	13*39°			9pcs	21±10%W	893±10mA	410±10LM
EM-LED-ALS-24V-3W25-3535RGB-470-9-YT1545	470*25mm	45*45°			9pcs	21±10%W	893±10mA	410±10LM

Accessories





Edgemax Led Strip (Edge lighting)

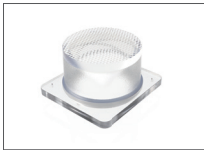
Using high-voltage design with direct connection socket, there is no need to connect a LED Driver with this LED module. High-quality aluminum to dissipate heat, high brightness, high lumen, long life-span.of commercial sites.



Accessories:



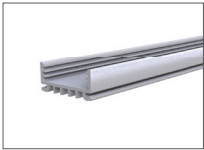
YT1339



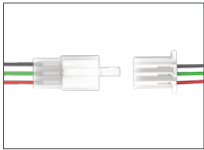
YT1545



YT0820



Profile

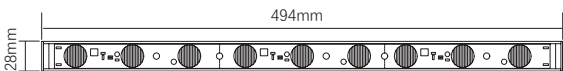
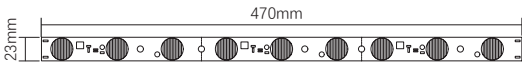
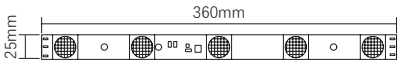


Terminal



Terminal

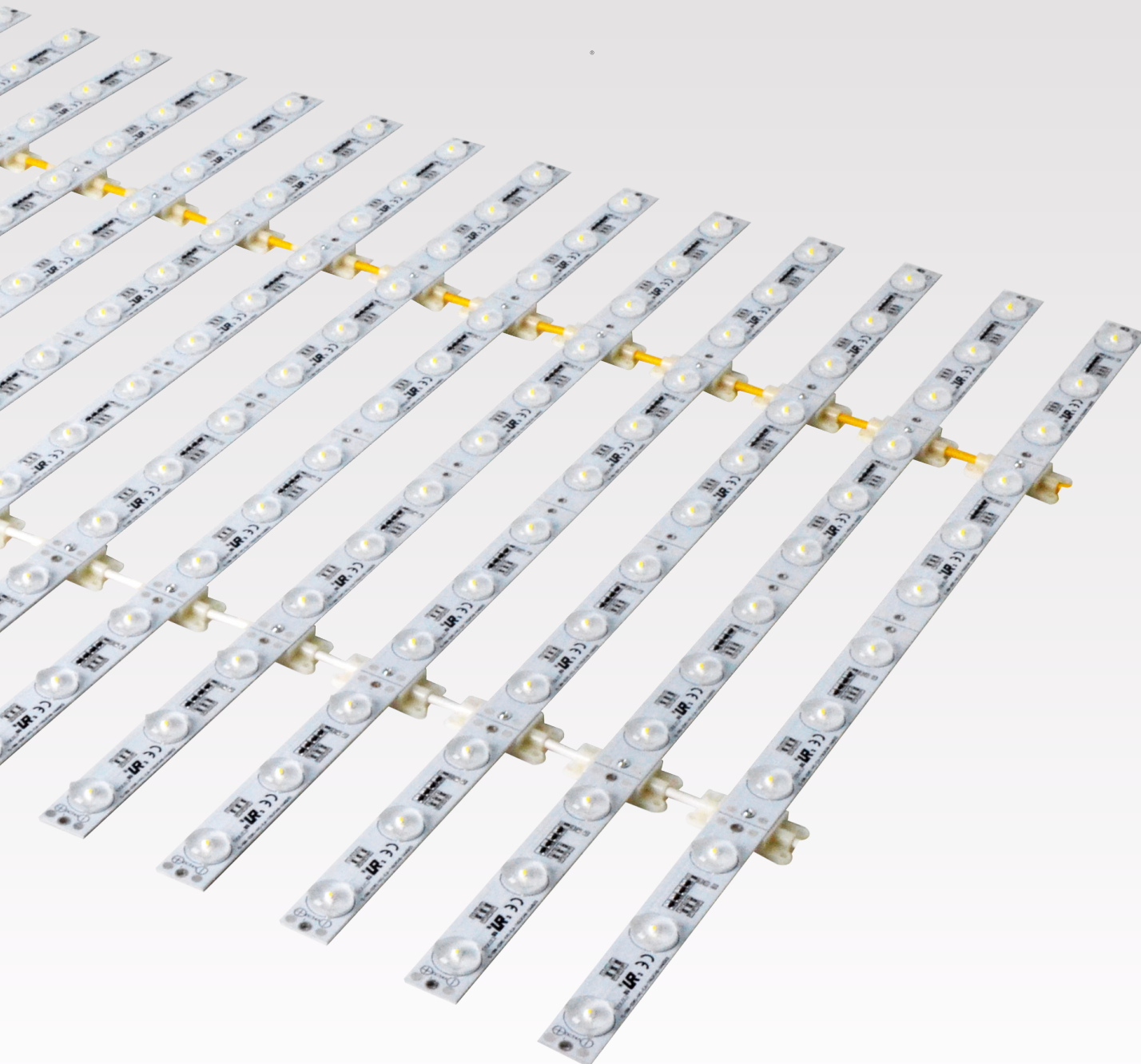
Dimensions:



Item	PCB Size	Emitting Angle	Voltage	Color	LED Q'ty	Power	Rated Current	Luminous Flux
EM-LED-ALS-24V-1W23-3535-470-9-YT1339	470*23mm	13*39°	24V	White	9pcs	12±10%W	515±10%mA	988±10%LM
EM-LED-ALS-24V-1W23-3535-470-9-YT1339-PG	470*23mm	13*39°			9pcs	27±10%W	1120±10%mA	2682±10%LM
WEM-LED-ALS-24V-1W28-3535-494-9-YT1339	494*28mm	13*39°			9pcs	27±10%W	1120±10%mA	2682±10%LM
EM-LED-ALS-24V-1W25-3030-360-5-YT1545	360*25mm	15*45°	24V	White	5pcs	15±10%W	638±10%mA	1490±10%LM
EM-LED-ALS-24V-1W23-OS3030-470-9-YT0820	470*23mm	8*20°	24V	White	9pcs	20±10%W	834±10%mA	2199±10%LM

Edgemax Backlight

LED Strip



Feature

Display Effect—High uniform without shadows, high color reducibility.

Easy Installation—Installstion efficiency is 80% improved so that the cost of labor is reduced greatly.

Low Power—Compared to the traditional flurescent tube, it can save more than 80% power.

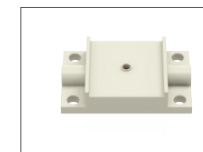
More Stable—It lower the maintenance cost greatly by using this stability LED lamp.

Working Environment— -30°C $\sim 60^{\circ}\text{C}$.

Accessories:

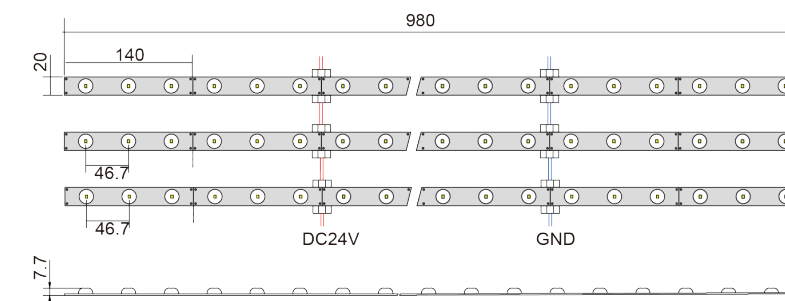


YT170



Connector

Dimensions:



Item	PCB Size	Emitting Angle	Voltage	Color	LED Q'ty	Power	Rated Current	Luminous Flux
BM-LED-ALS-24V-2W20-2835-980-21-YT170	980*20mm	170°	24V	White	21pcs	11.8±10%W	492±10%mA	1094±10%LM
BM-LED-ALS-24V-1W20-2835-980-21-YT170	980*20mm	170°	24V	White	21pcs	5±10%W	214±10%mA	405±10%LM

Edgelux Panel



The Edgelux® panel offers an extended functionality over the conventional LGP. The Edgelux® panel is by its super slim, light and simple design and easy installation characterized as environmentally friendly and can be used in a variety of backlighting application within the advertising industry.



LED chip



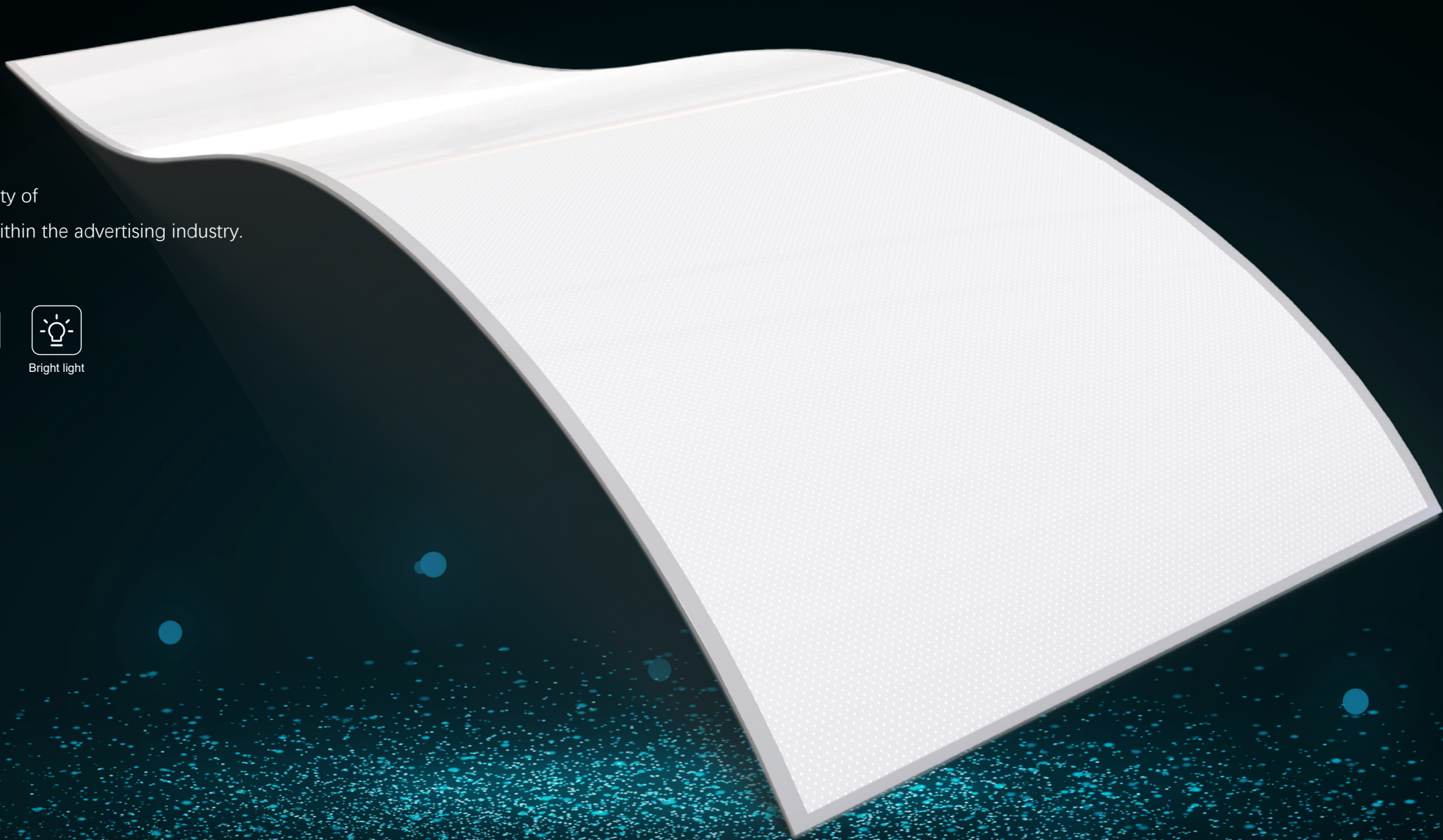
No noise



Ultra-thin



Bright light

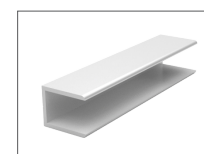


AF29 / AF49 / AF25E

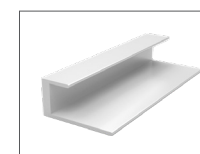
a range of heatsink profiles

1. Perfect even lighting, no flickering.
2. The quality of PMMA material used, allows more than 90% light output and provides a completely even lighting.
3. The use of AF29, AF49, AF25E and other narrow heatsink profiles around the panels, provide an excellent heat dissipation performance and thus effectively extends the life expectancy of the panel.

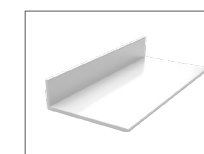
Profiles:



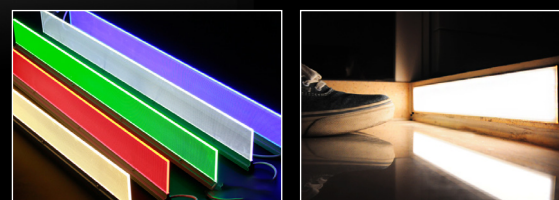
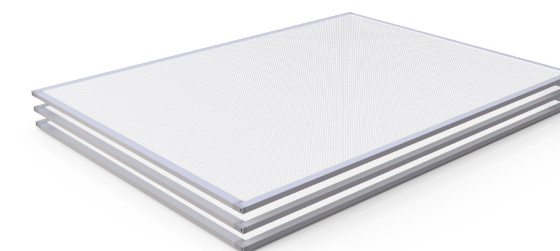
AF29
Thickness: 10.5mm
Border width: 13mm



AF49
Thickness: 8mm
Border width: 7mm



AF25E
Thickness: 8mm



Frameless Light Panel

1. The size can be customized.
2. High light efficiency, uniform brightness, Compared with traditional fluorescent lamps, it can save 70% energy.
3. Dimmable, with DALI/PWM/DMX signal, widely used in shops, architectural decoration lighting, backlighting.
4. Input Voltage: 12V / 24V.
5. Thickness: 16-50mm.
6. Material: PMMA acrylic, Aluminum profile.
7. CRI: >85.
8. Light Incident Surface: single-sided, double-sided, four-sided.

Color: customized



GREEN



BLUE



YELLOW



RED



WHITE



Light Box

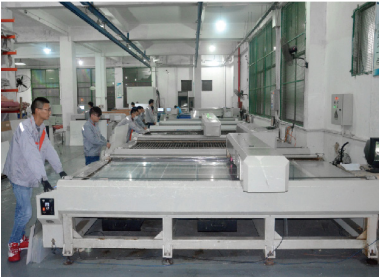


Edgelight can provide any light box solution for indoor and outdoor applications. Our engineers are there to listen to your wishes, to launch the design and to provide you with a solution that meets your requests.

Production Display



CNC Machining Center



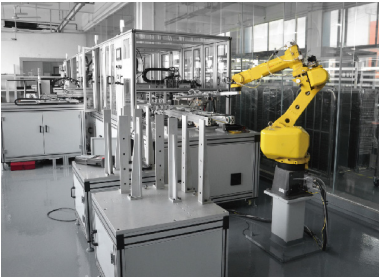
Laser Cutting Machine



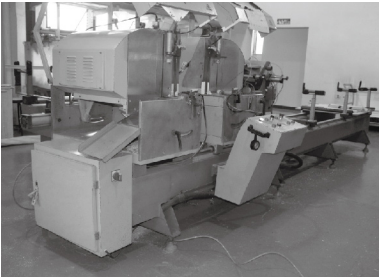
CNC Engraving Machine



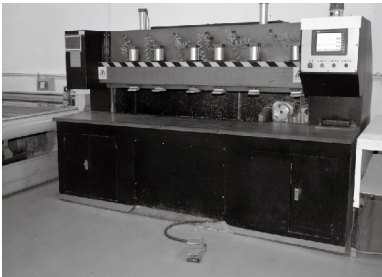
UV Printer



Automatic Light Box Assembly Line



Profile Cutting Machine



Diamond Polishing Machine



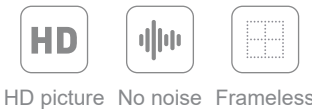
Dynamic Focus RBI Machine



Linear Motor RBI

Fabric Light Box

Frameless design



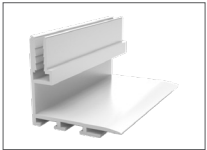
Feature

- Fabric Light box
- Packaging: Bubble wrap, carton, plywood
- Components: Edgelight LGP, aluminum frame, SMD LED
- Frame Color: Anodized aluminum, other colors possible
- Easy to install, safe and easy to use
- Suitable Size: Customized
- Input Voltage: 12V / 24V
- Visible Side: One side/two sides
- Power: 12W-400W

Frame Color: customized



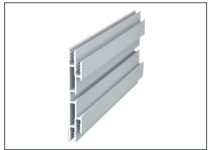
Hot Products:



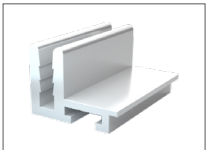
AF18C
Thickness: 37mm



AF45
Thickness: 90mm



AF96C
Thickness: 96mm



AF40
Thickness: 16.5mm



AF55S
Thickness: 120mm



AF55D
Thickness: 120mm

Clip Type Light Box

Ultra-thin design



HD picture



No noise



Energy-saving



Feature

To insert the Backlit, open the snap frame on all four sides and insert or replace the backlit behind the protective PET Cover.

Packaging: Bubble wrap, carton, plywood

Components: Edgelight LGP, aluminum frame, SMD LED

Frame Color: Anodized aluminum, other colors possible upon customer request

Easy replacement of the backlit, safe and easy to use.

Input Voltage: 12V / 24V

Light Incident Surface: Single-sided, double-sided

Power: 12W-120W

Size Classification: Small and medium size

Frame Color: customized



BLACK



GREY



YELLOW

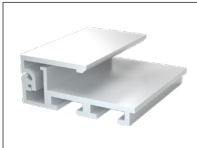


RED

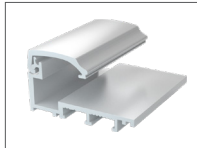


WHITE

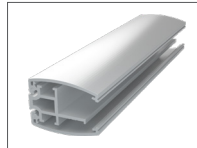
Hot Products:



AF14B
Thickness: 14.8mm
Border width: 22mm



AF80
Thickness: 19mm
Border width: 19.7mm



AF15
Thickness: 28mm
Border width: 35mm



Magnetic Type Light Box

Magnetic design

HD

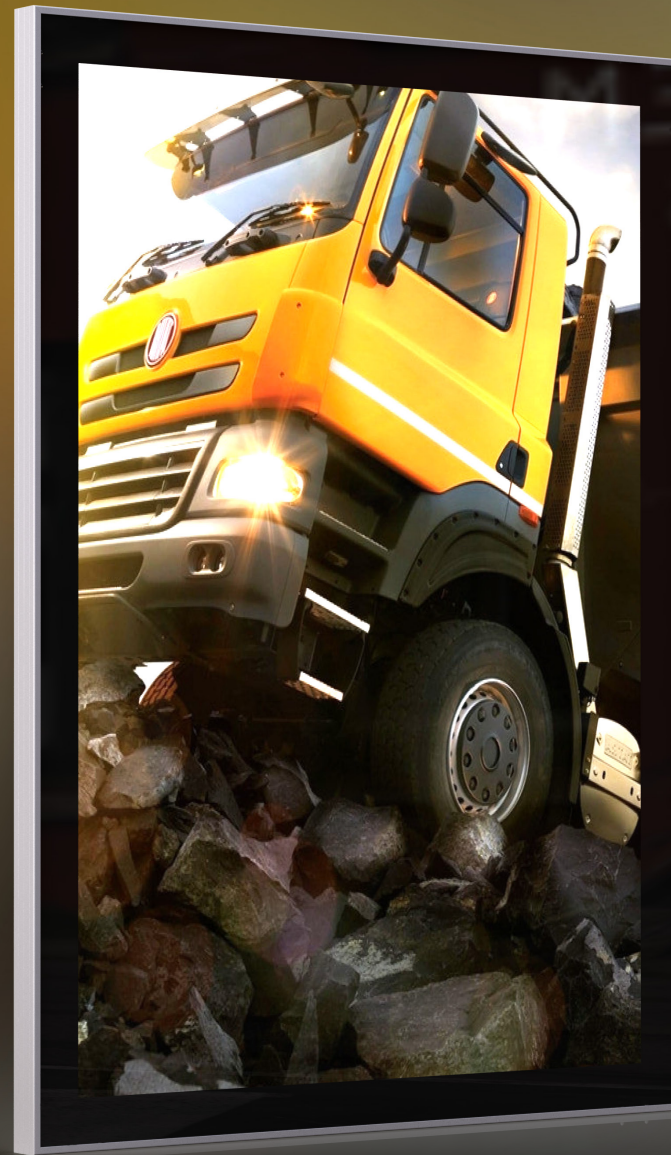
HD picture



No noise



Magnetic



Feature

To insert or replace the backlit, remove the magnetic front panel by using a suction cup.

Packaging: Bubble wrap, carton, plywood

Frame Components: Edgelight LGP, aluminum frame, SMD LED

Frame Color: Anodized aluminum, other colors on request

Easy Installation of the backlit, safe and easy to use.

Input Voltage: 12V / 24V

Visible Surface: One side/two sides

Power: 12W-120W

Size Classification: Small and medium size

Frame Color: customized



BLACK



GREY



YELLOW

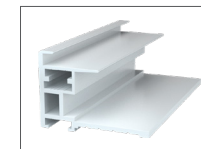


RED



WHITE

Hot Products:



AF12A

Thickness: 21mm
Border width: 4.4mm



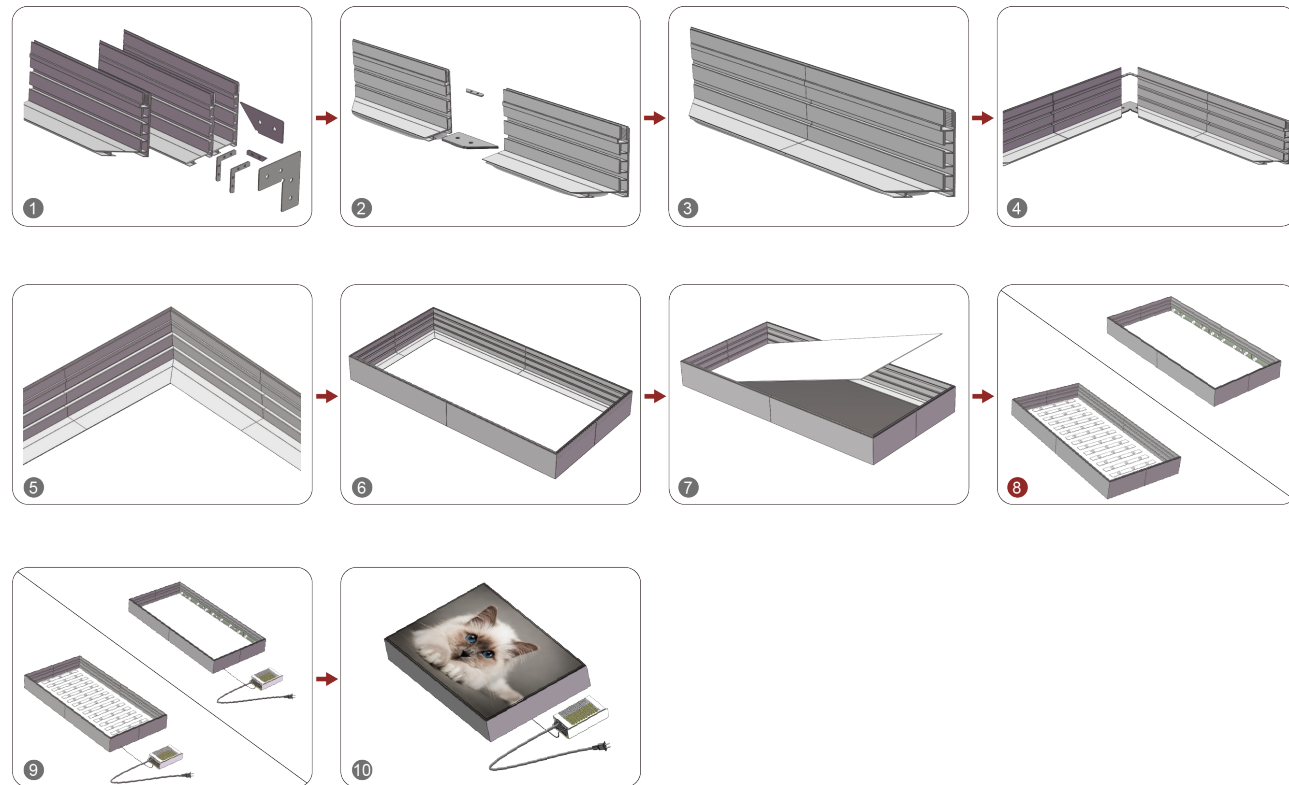
AF56

Thickness: 60mm
Border width: 4.4mm

Light Box

Installation Method

Two kinds of light sources



1. Prepare aluminum profiles and accessories.
2. Place the corners in the profile slots that require right angle stitching.
3. Flatten two sections of right angle stitching.
4. Insert the corner into the profile groove that requires 45 degree stitching.
5. Combine the two sections 45 degrees.
6. Merge the remaining sides one at a time.
7. Install the backplate.
8. Fix the high-power light bar in the slot of the profile in turn / Fix the backlight bar to the back plate.
9. Connect the power.
10. Install the canvas.



www.edgelight.com

Shanghai Edgelight Industry Co.,Ltd.

No. 1-5, Lane 218, Shenshen Road, Songjiang District, Shanghai 201611

Tel: (86)-21-6441 2288

Fax: (86)-21-6441 2266